

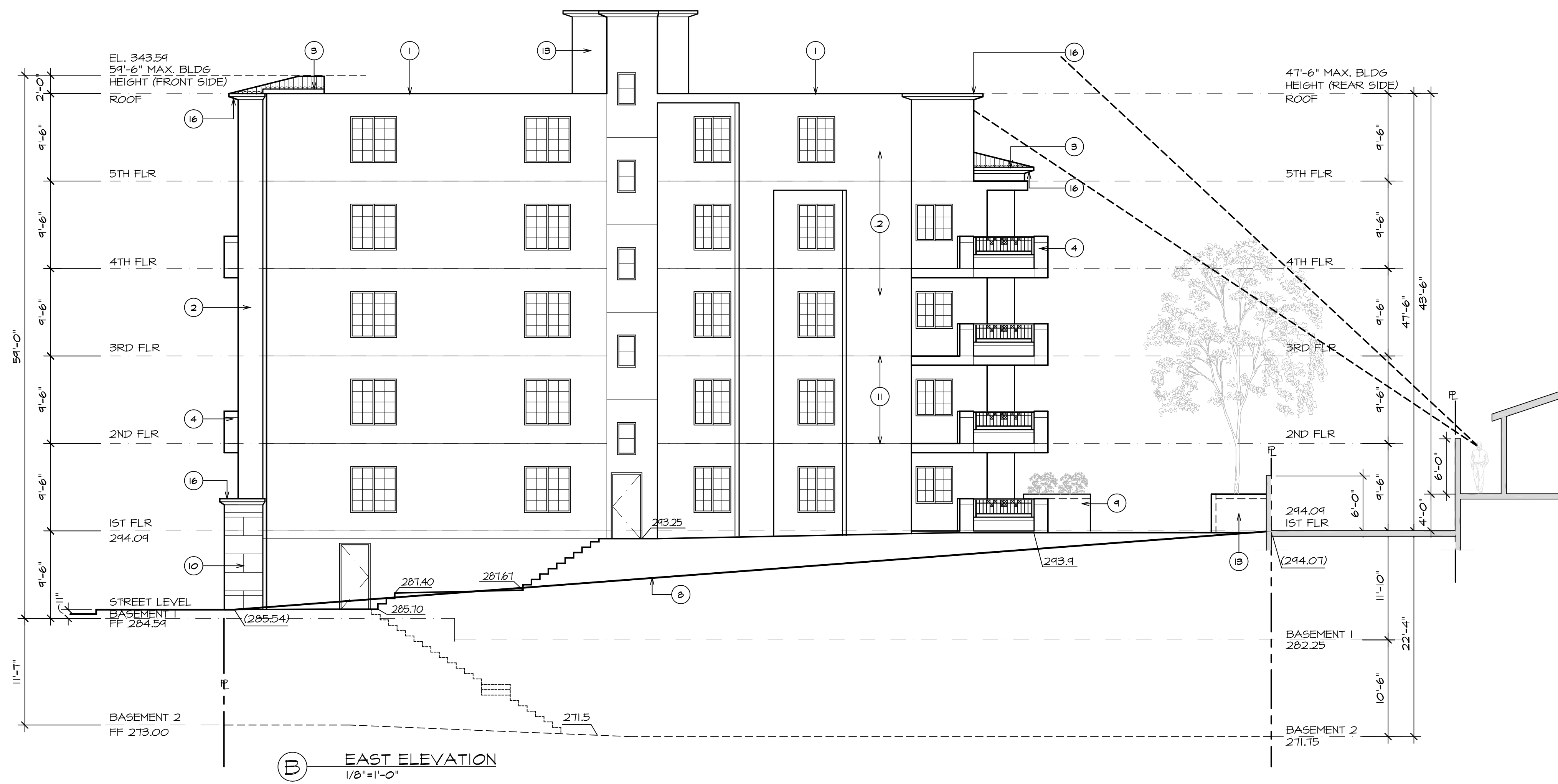


ELEVATION REFERENCE NOTES

- 1 BUILT-UP ROOF-CLASS 'A'
- 2 EXTERIOR STUCCO
- 3 LIGHT WEIGHT CONG. FLAT TILE ROOF
- 4 42" HIGH GUARDRAIL
- 5 DOWN SPOUT
- 6 G.I. GUTTER
- 7 STRUCTURAL FOAM
- 8 LINE OF NATURAL GRADE
- 9 PLANTER - 6" CMU
- 10 EXTERIOR TILE FINISH
- 11 STUCCO CONTROL JOINT
- 12 6' HIGH W.I. GATE
- 13 STAIR TOWER BEYOND
- 14 ELEVATOR TOWER BEYOND
- 15 ROOL-UP DOOR
- 16 STUCCO COVER FOAM CORNICE
- 17 STUCCO COVER FOAM TRIM
- 18 ALUMINUM STOREFRONT SYSTEM

ELEVATION LEGEND

(0.00) EXISTING GRADE ELEVATION  
 0.00 NEW GRADE ELEVATION



DATE	ISSUED FOR	REVISIONS
3/19/13	DENSITY BONUS	

**URIU & ASSOCIATES**  
 ARCHITECTURE, PLANNING  
 800 S. GLENDALE AVENUE  
 GLENDALE, CA 91205  
 (818) 247-2330

SHEET TITLE ELEVATIONS	JOB TITLE 10269 SANTA MONICA BLVD, LOS ANGELES
DRAWN	
CHECKED	
JOB 1260	
SHEET A8	

I:\projects\1260\1260-10269 SANTA MONICA BLVD\DWG\1260 ELEVATIONS.DWG, 5/1/2013 9:13:33 AM, Arc 10, 1:1